



SEOUL LOOSE-LAY VINYL PLANK INSTALLATION GUIDE

Home's Pro Seoul series Loose-Lay vinyl is a versatile floor covering which is quick and easy to install. It is particularly suitable for use in raised access floors and for temporary installations (can be uplifted and re-used). It is also recommended for use over correctly prepared concrete, wooden floors, metal and other suitable substrates. It is designed for interior use only. A separate underlay is not normally recommended.

SUITABLE SURFACES

Lightly textured or porous surfaces. Well bonded, Solid floors. Dry, clean, well-cured concrete (cured for at least 60 days prior). Wood floors with plywood on top. All surfaces must be clean and dust free.

UNSUITABLE SURFACES

Rough, uneven surfaces including carpet and underlay. Rough, heavily textured and/or uneven surfaces may telegraph through and distort the finished surfaces. This product is not suitable for rooms that could potentially flood or rooms that have damp concrete or saunas. Do not install this product in areas which are exposed to long term direct sunlight such as sun rooms or solariums

WARNING: DO NOT REMOVE OLD RESILIENT FLOORING. THESE PRODUCTS MAY CONTAIN EITHER ASBESTOS FIBERS OR CRYSTALLINE SILICA, WHICH CAN BE HARMFUL TO YOUR HEALTH.

RADIANT HEATED FLOORS

Can be installed using a permanent glue/adhesive over hydronic radiant heated floors or electric radiant heated floors that use embedded cables under the subfloor. Do not install over any electric heating mat that is installed on top of the subfloor. Do not turn heat above 29 °C.

PREPARATION

The vinyl planks should be allowed to acclimatize at room temperature (approximately 20°C) for 48 hours prior to installation. Carefully check planks for any defects before installation. Check that all ITEM NUMBERS are the same and that you have purchased sufficient material to complete the job. Remove any traces of glue or residue from the previous flooring. New concrete floors need to dry out for at least 60 days prior to installation. Wood plank floors require a plywood sub floor. All nail heads must be driven down below the surface. Securely nail all loose boards. Scrape, plane or fill uneven boards, holes or cracks using floor-leveling compound. Make sure the floor is smooth, clean, and free of wax, grease, oil or dust and sealed as necessary before laying planks. For ceramic floors, fill grout lines with a proper leveling compound. Sub floors must be even within 3 mm over 1.82 m (1/8" over 6').

WARNING: THE MAXIMUM RUN LENGTH IS 6.4M (21 FT.) IN EITHER DIRECTION OR AN AREA OF 441 FT. FOR INSTALLATIONS EXCEEDING THIS SIZE, THE FLOOR WILL NEED TO BE GLUED OR TAPED EVERY 6.4M (21 FT).

TOOLS AND SUPPLIES

Utility knife, acrylic-based adhesive and notched trowel or double-sided tape (specifically formulated for vinyl), pencil, tape measure, ruler and safety goggles.

INSTALLATION

Begin laying your floor at the corner of the longest wall. Lay a complete row of planks to determine the length of the final plank. If the last plank is shorter than 300 mm (11.8"), then adjust the starting point accordingly. This is necessary in order to achieve the correct staggered effect. The cut edge should always face the wall. **Diagram 1.**

The Perimeter

It is a good idea to spot glue or use double-sided tape to secure the planks that will be placed around the perimeter of your room. Apply a small amount of adhesive (recommended by your flooring dealer or manufacturer) or tape to your first plank and position at your starting point. Check that the position is correct and firmly apply pressure to achieve complete contact. Continue laying the first row this way, ensuring a close fit but do not force together. When you reach the end of the row, cut the last plank to fit. Cut edge should always face the wall.

NOTE: For heavy-duty commercial applications, or areas with excess moisture (bathrooms, laundry rooms, restaurants, etc.), the planks must be permanently glued down.

Continue Laying the Floor

Spot glue or tape down to the first and last plank in every row, as well as a single row of planks every 1524 mm (5') in a grid pattern. If the off-cut piece from your last row is longer than 300 mm (11.8"), you can use this to start

your second row. Ensure that the cut edge always faces the wall. Stagger the joints a minimum of 300 mm (11.8") apart. **Diagram 2.**

Continued installing planks in the same way as described above. To fit air vents, door frames etc., make a cardboard pattern as a guide and use this to draw an outline on the plank. Cut to shape and check that it fits. It should fit snugly and should not be forced into place.

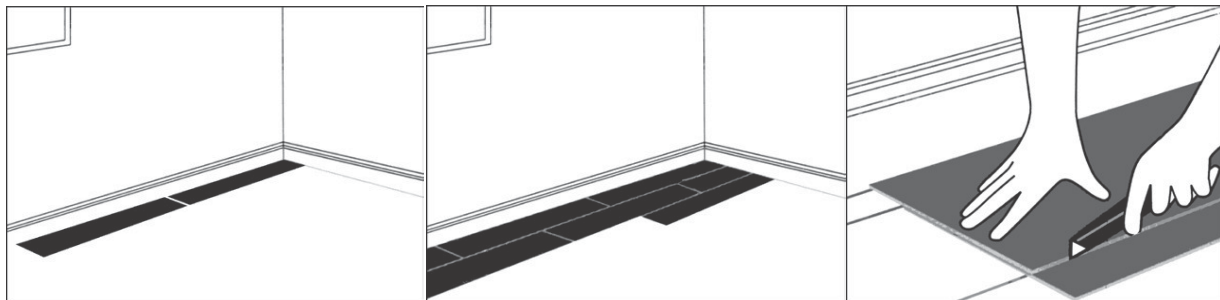
Final Row Of Planks

When you reach the last row, you may find that the gap is less than one full plank width. To ensure accurate cutting of the final row, lay the plank to be cut exactly over the last full plank. Lay another full plank against the wall and mark the cutting line where the planks overlay. Check that the cut plank fits correctly. Then spot glue or tape all of the planks in the last row and press into place. The plank should not be forced into place. **Diagram 3.**

1.

2.

3.



STAIRS

For installation on stairs and landings, it is recommended using a permanent glue/adhesive (recommended by your flooring dealer or manufacturer). Stair nosings should be metal or rubber.

CARE AND MAINTENANCE

Avoid exposure to direct sunlight for prolonged periods of time. Use drapes or blinds to minimize direct sunlight during peak sunlight hours.

When you have finished laying your floor, clean up any remaining or spilled adhesive with a damp cloth. Allow 5 to 7 days before washing the floor to allow the perimeter planks to adhere to the sub floor.

If an edge or corner of the flooring happens to lift slightly in specific areas, use double sided floor tape to adhere the floor flush to the subfloor.

Sweep regularly to remove surface grit and dust. Use a damp cloth or mop to clean up any dirt and footprints. All spills should be cleaned up immediately.

CAUTION: Planks are slippery when wet.

- Never use wax, polish, abrasive cleaners or scouring agents as they may dull or distort the finish.
- High heels can damage floors.
- Do not allow pets with unclipped nails to scratch or damage the floor.
- Use protective pads under furniture.
- Use doormats at entrance ways to protect the floor from discoloring. Avoid using rubber-backed rugs, as they may stain or discolour the vinyl flooring. If you have an asphalt driveway, use a heavy-duty doormat at your main door, as chemicals in asphalt can cause vinyl flooring to yellow.

It's a good idea to save a few planks in case of accidental damage. Planks can be replaced or repaired by a flooring professional. If other trades are in the work area, a floor protector is highly recommended to help protect the finish of the floor.

CAUTION: Some types of nails, such as common steel nails, cement coated or some resin-coated nails, may cause a discoloration of the vinyl floor covering. Use only non-staining fasteners with underlayment panels. The procedure of gluing and screwing underlayment panels is not recommended. Solvent-based construction adhesives are known to stain vinyl floor coverings.

All responsibility for discoloration problems caused by fastener staining or the use of construction adhesive rests with the underlayment installer consumer.

WARRANTY

This guarantee is for replacement or refund of the vinyl plank flooring only, not labor (including the cost of labor for installation of the replacement

floor) or costs incurred with loss of time, incidental expenses or any other damage. It does not cover damage from improper installation or maintenance (including side or end gapping), burns, tears, indentations, stains or reduction in gloss level due to normal use and/or exterior applications. Gapping, shrinkage, squeaks, fading or structural sub floor related issues are not covered under this warranty. Temperature variations - excessive heat or below freezing (-4°C and below) – may cause expansion or contraction of the product.

30 Year Residential Limited Warranty

Our 30 Year Residential Limited Warranty for vinyl plank means that from the date of purchase, your floor will be free from manufacturing defects and will not wear through or permanently stain from common household stains when installed and maintained according to instructions supplied with each carton.

10 Year Commercial Limited Warranty

Our 10 Year Limited Commercial Warranty for vinyl plank means that for 10 years, from the date of purchase, your floor will be free from manufacturing defects and will not wear through when installed and maintained according to instructions supplied with each carton. Improper installation or workmanship should be directed to the contractor who installed the floor.

CLAIMS

The is guarantee applies only to the original purchaser and proof of purchase is required for all claims. Claims for wear must show a minimum dime sized area. This guarantee is pro-rated based on the amount of the time the floor has been installed. If you wish to file a claim under warranty, contact the authorized dealer where the flooring was purchased.

Email: info@homespros.ca

www.homespros.ca